



CE-  
Kennzeichnung



Geringes  
Gewicht



Hohe  
Festigkeit



Korrosions-  
beständig



Chemikalien-  
beständigkeit



Elektrisch  
isolierend



Leicht zu  
verarbeiten



Minimaler  
Wartungsaufwand

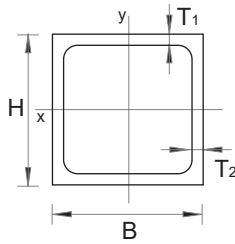
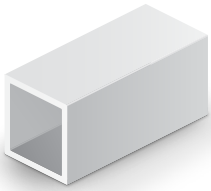


Nachhaltigkeit



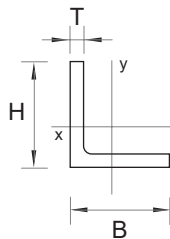
Thermisch  
isolierend

## Vierkantrohre



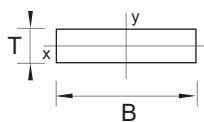
H	B	T1/T2	g	A	Ixx	E0o	Lagerware
mm	mm	mm	g/m	$\times 10^3 \text{ mm}^2$	$\times 10^6 \text{ mm}^4$	GPa	
50	50	5/5	1.630	0,90	0,31	28	•
60	60	5/5	2.000	1,11	0,57	28	•
75	75	6/6	2.999	1,67	1,33	28	
75	75	8/8	3.870	2,15	1,63	28	
80	60	5/5	2.360	1,31	1,15	28	
100	60	8/8	4.180	2,31	2,84	28	
100	100	6/6	4.090	2,27	3,36	28	
100	100	8/8	5.320	2,96	4,21	28	
114	114	6/6	4.684	2,60	5,08	28	
114	114	8/8	6.124	3,40	6,41	28	
114	114	10/10	7.506	4,17	7,59	30	
120	60	5/5	3.060	1,70	3,09	28	
120	120	6/6	4.940	2,75	5,98	28	
120	120	8/8	6.480	3,60	7,57	28	
132	132	7/7	6.370	3,54	9,62	28	
132	132	9,5/9,5	8.690	4,73	11,95	28	
140	60	6/5	3.650	2,00	5,08	28	
160	160	8/8	8.850	4,92	19,10	28	
200	200	10/10	13.840	7,69	46,50	30	
240	240	12/12	20.000	11,00	96,40	31	

## Winkelprofile

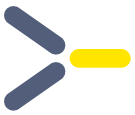


H	B	T	g	A	Ixx	E0o	Lagerware
mm	mm	mm	g/m	$\times 10^3 \text{ mm}^2$	$\times 10^6 \text{ mm}^4$	GPa	
50	50	6	1.026	0,57	0,13	28	•
50	50	8	1.350	0,75	0,17	28	
75	75	6	1.555	0,87	0,47	28	
75	75	8	2.045	1,15	0,60	28	•
80	80	8	2.189	1,23	0,74	28	
100	100	8	2.765	1,55	1,49	28	
100	100	10	3.420	1,91	1,80	30	•
100	100	12	4.061	2,27	2,10	31	
150	100	8	3.500	1,95	4,57	28	
150	100	10	4.320	2,41	5,59	30	
150	100	12	5.141	2,87	6,57	31	
150	150	8	4.205	2,35	5,21	28	
150	150	10	5.220	2,94	6,38	30	
150	150	12	6.221	3,47	7,51	31	•

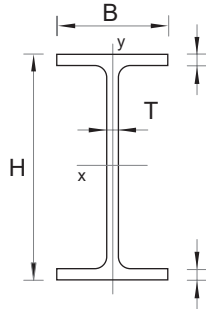
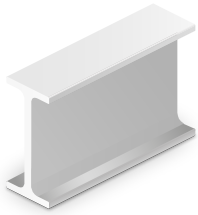
## Flachprofile



B	T	g	A	Ixx	E0o	Lagerware
mm	mm	g/m	$\times 10^3 \text{ mm}^2$	$\times 10^6 \text{ mm}^4$	GPa	
30	6	320	0,18	0,54	28	
50	6	540	0,30	0,90	28	
50	10	900	0,50	4,20	30	
100	6	1.080	0,60	1,80	28	
100	8	1.444	0,80	4,30	28	
100	10	1.800	1,00	8,30	30	•
500	6	4.400	3,00	9,00	28	
500	10	9.000	5,00	41,70	30	•

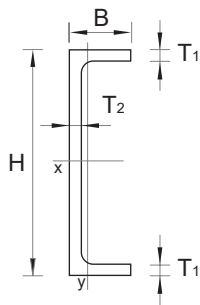
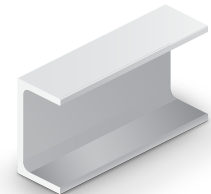


## I-Profile



H	B	T	g	A	I <sub>xx</sub>	E <sub>0o</sub>	Lagerware
mm	mm	mm	g/m	x 10 <sup>3</sup> mm <sup>2</sup>	x 10 <sup>6</sup> mm <sup>4</sup>	GPa	
120	60	6	2.550	1,42	3,10	28	•
160	80	8	4.480	2,49	9,66	28	•
200	100	10	6.990	3,89	23,60	30	•
240	120	12	10.100	5,60	48,90	31	•
300	150	15	15.700	8,74	119,00	31	
360	180	18	22.700	12,60	248,00	31	

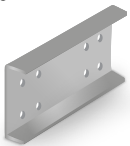
## U-Profile



H	B	T1/T2	g	A	I <sub>xx</sub>	E <sub>0o</sub>	Lagerware
mm	mm	mm	g/m	x 10 <sup>3</sup> mm <sup>2</sup>	x 10 <sup>6</sup> mm <sup>4</sup>	GPa	
70	30	5/5	1.08	0,60	0,40	28	
85	31	5/5	1.230	0,68	0,66	28	
100	30	6/6	1.611	0,90	1,15	23	•
100	50	6/6	2.043	1,14	1,68	23	
114	41	6/6	2.000	1,11	1,98	23	
120	50	6/6	2.290	1,27	2,65	23	•
150	40	6/6	2.394	1,33	3,90	23	
160	48	8/8	3.510	1,95	6,57	28	•
200	60	10/10	5.480	3,04	16,00	30	•
200	80	8/8	5.460	2,760	16,02	28	
240	72	8/8	5.350	2,97	23,30	28	•
240	72	12/12	7.890	4,38	33,20	31	
300	90	15/15	12.300	6,85	81,20	31	•
360	108	18/18	17.800	9,86	168,00	31	•

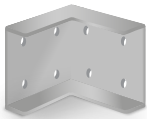
## Standardbeschlage fur I- und U-Profile

0°



Profilhohe	H	Lochzahl
mm	mm	-
120	108	8
160	144	8
200	180	8
240	216	12
300	270	12
360	324	12

90°



Profilhohe	H	Lochzahl
mm	mm	-
120	108	8
160	144	8
200	180	8
240	216	12
300	270	12
360	324	12

### Bitte beachten: Es gibt Zwei Lagerkategorien

1. Standard Lagerware, vorratig, Zwischenverkauf vorbehalten.
2. Profilproduktion nur nach Kundenauftrag (Mindestmenge erforderlich). Bitte kontaktieren Sie uns, ob ggf. Restbestande vorhanden sind.